

## **Metl-Con Database Installation Instructions Version 13**

The zip file contains four files; a **Metl\_Con\_V13\_Mk4.lis** file, a **profdb.bin** file, a **METL-CONreport.dat** file and a **METL-CONTransfer.dat** file.

(Extract these files onto your desktop for easy access)

---

### **Profdb.bin**

The profdb.bin file can be copied straight into:

C:\TeklaStructures\13.0\environments\uk\profi

(Before copying it in, it is suggested that you rename your old profdb.bin as *profdb.bin.old*). Doing this will automatically update all your models with the new database, and any model that does not have a database within its model folder.

### **METL-CONreport.dat/METL-CONTransfer.dat**

The METL-CONreport.dat file and the METL-CONTransfer.dat files can be copied straight into:

C:\TeklaStructures\13.0\environments\uk\profilcr

(Before copying it is suggested that you add '.old' onto the filenames). Doing this will automatically update all your models with the new Transfer information.

---

If you have a firm folder, then the files will need to be copied there.

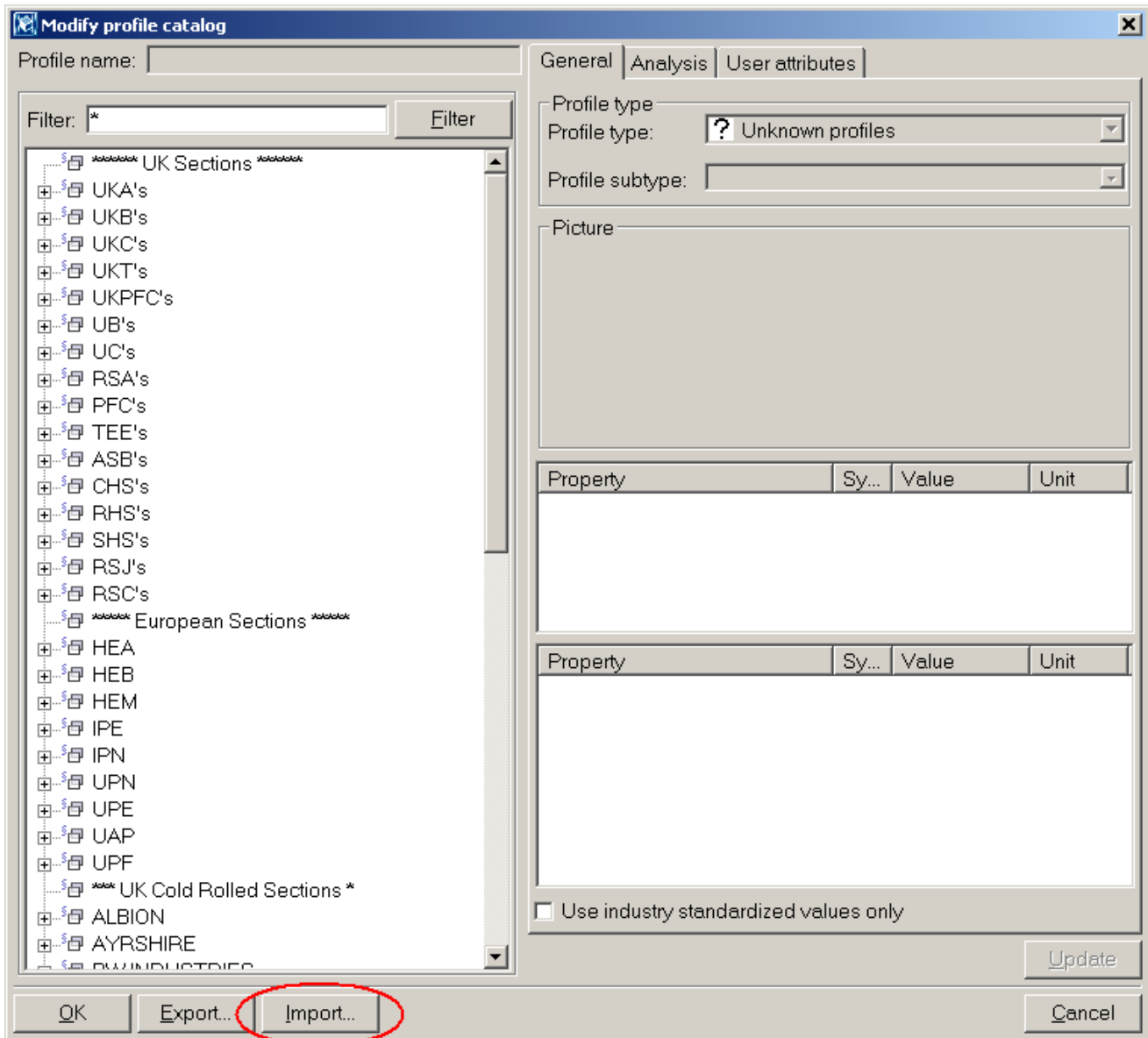
Alternatively to test / check the new database, create a new model and copy the database into it (model folder). Close and re-open the model WITHOUT saving it.

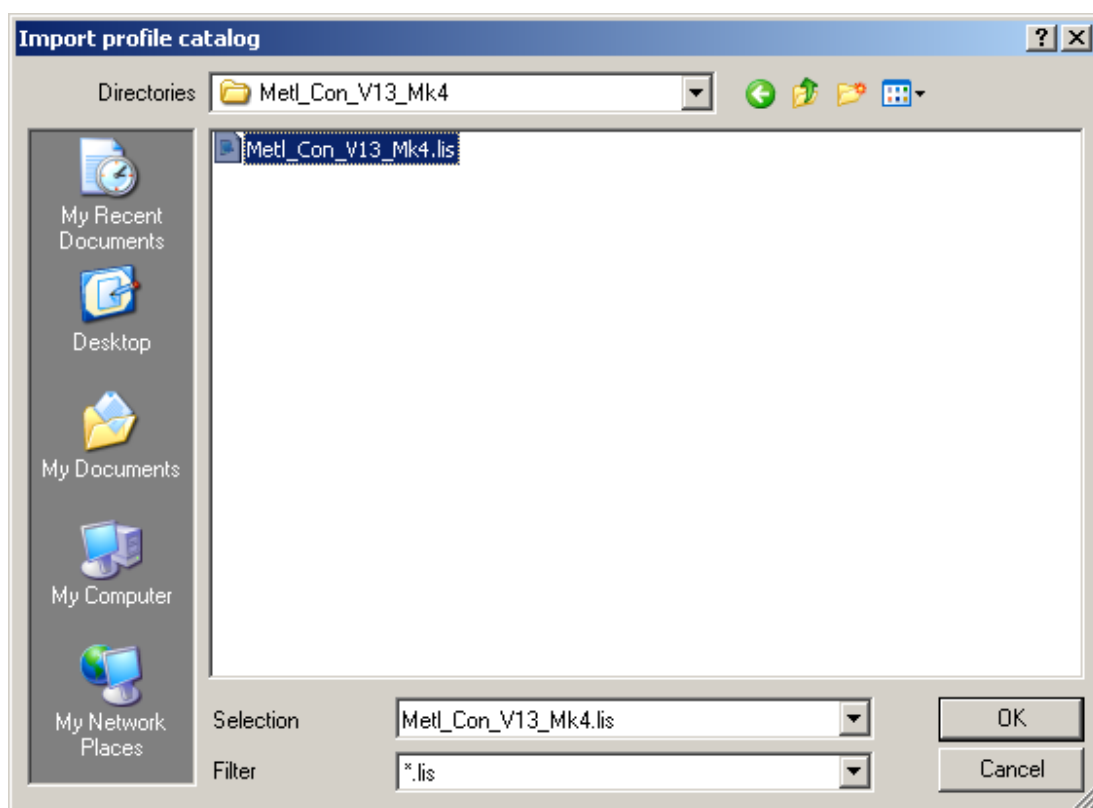
.

Metl\_Con\_V13\_Mk4.lis

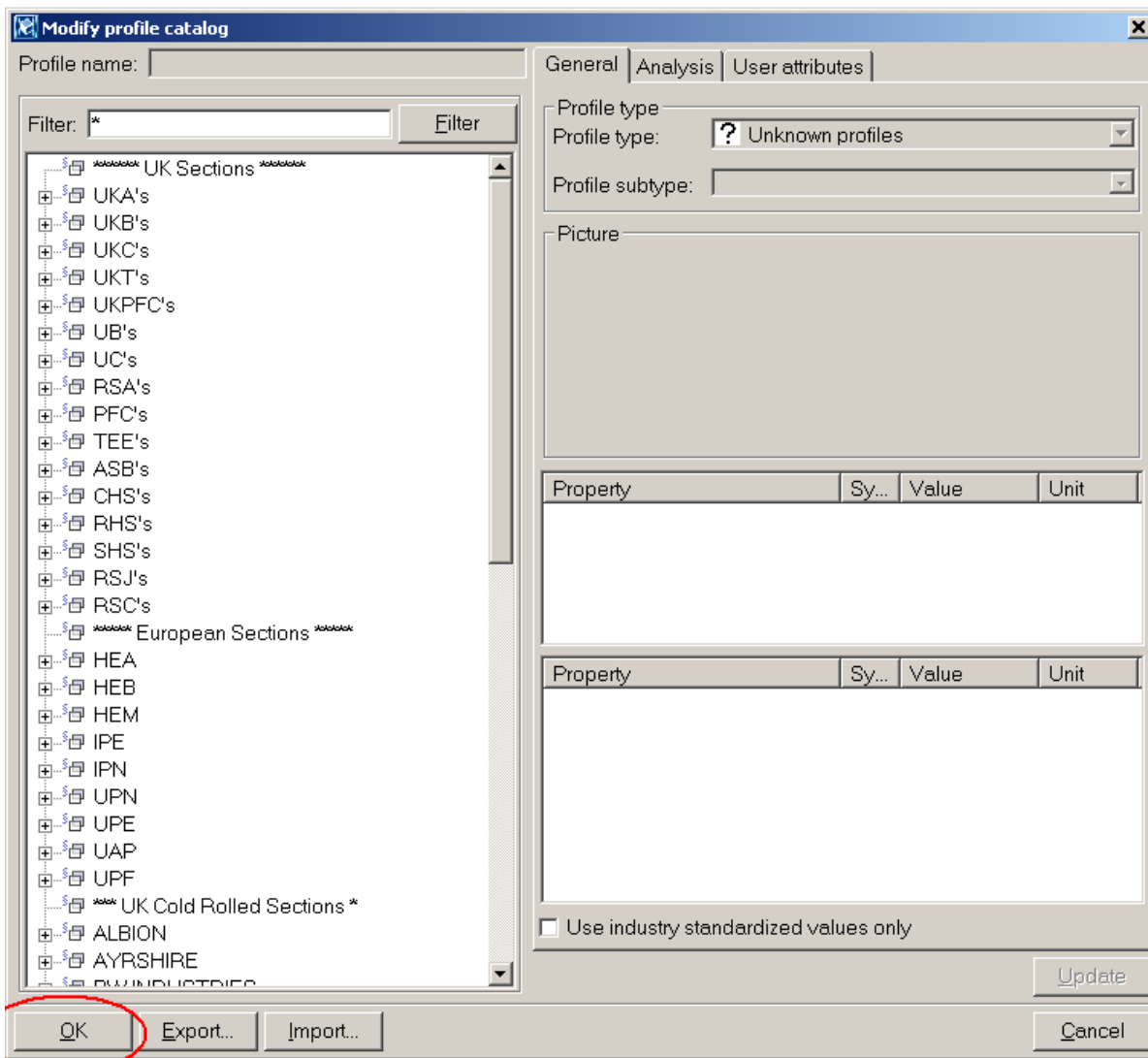
This file will require importing into your current profile database.

Open a new model, and go to your profile database (File > Catalog > Profiles > Modify)

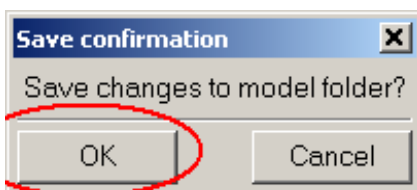




Import the file "Metl\_Con\_V13\_Mk4.lis" and click OK  
(File is in folder "Import these Profiles into database", located in the extracted folder on your desktop).



Click OK



A dialogue box (pictured above) will appear asking you to save. Click OK

Profiles will have been successfully imported.